

ALBERT PARK OUTSIDE SCHOOL HOURS CARE



KEY INFORMATION SHEET 2025

ADDRESS:

BRIDPORT ST
ALBERT PARK VIC 3206

HOURS OF OPERATION:
BEFORE SCHOOL CARE
7.00AM-9.00AM

AFTER SCHOOL CARE
3.30PM-6.00PM

CURRICULUM DAY
7.00AM-6.00PM

CONTACT DETAILS:

PHONE: 0413544966

EMAIL: ADMIN@COMMOSH.EDU.AU

WEB: www.commosh.edu.au



CommunityOSH welcomes you to the Albert Park Primary School OSHC Program. We are passionate about offering innovative and engaging care environments for children that challenges them to learn and succeed. We are dedicated to providing working families with the affordable support they need and peace of mind knowing their children are safe and cared for.

Session fees prior to Child Care Subsidy:

Before School Care	\$28.50	(average out of pocket cost \$12.50)
After School Care	\$34.00	(average out of pocket cost \$16.50)
Short Stay	\$22.00	(average out of pocket cost \$9.00)
(for children attending after an extra curricular)		
End of Term Early Finish	\$38.00	(average out of pocket cost \$18.50)
Curriculum Day	\$70.00	(average out of pocket cost \$28.00)

ENROL AT WWW.COMMOSH.EDU.AU

Click on the Parent Portal button to enrol your child/children and manage your bookings.

ABOUT YOUR OSHC PROGRAM

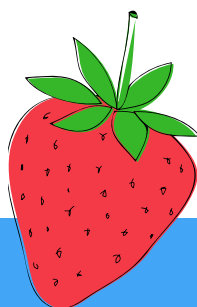


What we provide:

An exciting and engaging program of activities for the children to choose from. The program is fully stocked with modern resources that appeal to a wide range of interests and ages. A delicious and nutritious breakfast and afternoon snack is on the menu everyday.

What to bring:

Children to bring a hat, drink bottle and weather appropriate clothing.



How to enrol and book:

To enrol & book into the program please create an account at www.commosh.edu.au You can then log into your account at any stage and manage your bookings at any time.

Payments:

Payments are made in arrears fortnightly during the term via credit card or direct debit from your nominated bank account. Prior to charge your statement is emailed to you for you to review.

How to cancel a booking:

Cancellations and changes can be made at no charge up to 5.30pm the night before your After School Care session. You can either log into your account or contact our Customer Care Team to update your bookings on 9977 3000.

Late Pick Up:

We understand that it is not always easy to pick up on time so when you are genuinely late we do not charge for the first 5 minutes. Additional time is charged at \$1.00 per minute. Please assist by contacting the program to let them know you are going to be late.

Policies

Please refer to the Policy & Procedure document available at the program in relation to: enrolment, payment, staffing, programming, sign in/out of children into program, behaviour management, illness & infectious diseases, dietary, anaphylaxis and asthma management.

Complaints

Complaints can be made directly to your account manager at admin@commosh.net.au or 9977 3000. If you are not satisfied with how your complaint was managed please contact Northern Metropolitan| Quality Assessment & Regulation Division Department of Education and Phone: 1300 338 691 Fax: 03 9488 9400 Postal address: Locked Bag 2001, Coburg, VIC 3058 Location: Level 2, 189 Urquhart Street, Coburg 3058 nmr.qar@education.vic.gov.au

